



Making everyday life easier

A guide to Handicare stairlifts

Making everyday life easier

If you have difficulty getting up and down stairs you are not alone. Every year thousands of people look for a solution to the problems posed by the difficulty they have using the staircase in their home.

The decision to install a stairlift is sometimes a difficult one to take but, when compared with the alternative of moving, or living on only one level of their home, many people have found a stairlift to be their preferred solution.

The idea of deciding which stairlift is right for you, and having it fitted, may be daunting at first; however they can usually be fitted in a couple of hours and this guide will help explain what you need to think about when choosing your Handicare stairlift.

We hope it will make identifying the stairlift that is right for your needs both now and in the future much easier.

Using a stairlift

Unless you know someone who is already benefitting from using a stairlift you may be a little unsure of what is involved in owning and using a stairlift.

It is a popular misconception that stairlifts are fixed to the wall. This is rarely the case with domestic stairlifts, where they are usually fitted directly on to the staircase itself.

A stairlift has three basic components. Firstly, a track is fitted to your stairs and a power pack (the drive unit) is fitted to the track, this is the unit that will travel along the track, then the seat that most suits your needs is fitted to the power pack.

All stairlifts are operated by a switch or toggle that is held in the direction of travel to make the lift move. When it is released the lift will stop moving.

Whilst stairlifts are very simple to use they are mechanical devices and do require annual servicing and maintenance.





Choosing a stairlift to suit your staircase

Stairlift tracks fall into two basic categories: straight and curved; it can be confusing to know which type you need.

Straight stairlifts

Straight stairlift tracks can only travel in straight lines, they cannot turn a corner or go around a bend. Straight stairlifts are suitable for use where a stairlift only needs to travel in one straight line; for example from the hall to the landing as shown in diagram A.

Handicare offers a range of straight stairlifts to suit your needs: the Handicare 1000 and the Simplicity Series are detailed on pages 16-19.

Curved stairlifts

Curved stairlifts have tracks that are specifically designed to suit staircases that turn corners or are spiral: the staircases shown in diagrams B, C and D are some examples of the type of staircase that curved stairlifts can be used on, but there are many more.

Handicare offers two curved track systems: one with one rail, the other with two. Both tracks are made to order following a survey

of each individual staircase both, can accommodate a wide range of staircase configurations and will hug the edge of your staircase whilst providing a safe and smooth ride for you too.

Every staircase that is curved or turns a corner will have a shorter and longer side. You may hear stairlift tracks being referred to as internal and external depending on which side of the staircase they sit on.

Our twin tube system is called the Handicare 2000, it can travel either side of the staircase. See pages 21-22 for details.

Handicare's single tube system has three track names: the Van Gogh, Rembrandt and Vermeer which identify track type. The Rembrandt travels along the shorter side of the staircase, the Van Gogh the longer and the Vermeer describes a track that travels over multiple floors. You will find details of the single tube system on pages 23-24.





Stairlifts and configurations

Straight stairlifts cannot travel around any bend or corner.



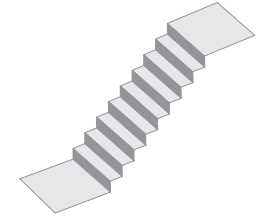
Handicare 1000



Simplicity+



Simplicity



A

Curved stairlifts can travel around corners, across intermediate landings and even up spiral staircases! Designed for your staircase, your track will fit snugly and give you a super smooth ride.



Handicare 2000 Style
Twin Tube



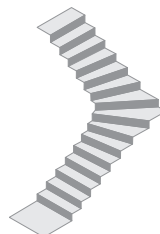
Handicare 2000 Simplicity
Twin Tube



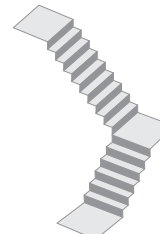
Elegance
Single Tube



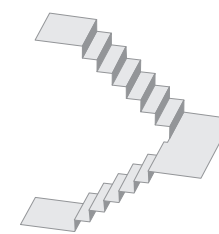
Classic
Single Tube



B



C



D

A stairlift that is exactly right for you

Staircase survey

You do not need to worry about measuring your staircase, your Handicare supplier will do this for you. They will advise you of any adjustments required to fit your stairlift (e.g. move a cupboard) and which is the best side of your staircase to fit your Handicare stairlift.

Most staircase surveys are quick and easy to perform. If your staircase is more complex with intermediate landings, fan stairs or a spiral for example, the survey will be conducted quickly with Handicare's photographic system.

Handicare curved stairlift tracks are designed to suit your individual staircase so it is important the staircase is measured accurately to ensure your track is the best possible fit for you and your home. Most Handicare partners use our photographic survey system for measuring curved staircases.

This specially developed electronic system maximises the accuracy of a curved staircase survey whilst minimising the time needed to carry it out. Cards are placed on and around the stairs and photographed. Our specialist software measures these images to create an accurate

3D model of your staircase to ensure your track is designed to fit your staircase perfectly.

If you are thinking about having a stairlift you are faced with a number of choices: selecting the options that mean the stairlift will meet your needs and also considering how it will look once installed too. Will it compliment your décor or leave enough space for others to use the stairs too for example?

Seeing it in place, in advance of ordering would be a great way of answering these questions.

At Handicare we understand how difficult it is to imagine what a stairlift will look like on your stairs by just looking at pictures in a brochure or on a website. We know that you want to make the best choice possible and we are delighted to be able to offer you additional help to make choosing the right stairlift a lot easier!

You can have a 3D preview of Handicare's stairlift range in the comfort of your own home, and see how each one would look in your hallway too, thanks to Handicare's Vision app. Vision by Handicare is a special app we have developed to enable our partners to show you what a stairlift will look like on your stairs.



Vision lets you view various systems and colours from our across range. Your advisor can even print a picture of the Handicare stairlift on your stairs before it is installed or email you the picture so that you can share it with friends and family – you can even see it with different colours of upholstery to help you choose the solution that is right for you and your home.

User assessment

Your Handicare supplier will wish to conduct a User Assessment at the same time as conducting the Staircase Survey.

During this assessment some measurements may be taken to ensure the stairlift chosen is suitable for the person using it. There will also be some simple questions to see which would be the best side to place the controls, what sort of seat belt would most suit the user/s and to ascertain which features would be required now and in the future.

The assessment is non-intrusive and whilst it is preferable that this is conducted in advance the non-availability of the user will not prevent the supply of a stairlift as long as someone will provide the information on the user's behalf.

Handicare stairlifts are designed to cater for a wide range of abilities and carry a series of adjustments (e.g. seat height or handing of the controls) that can be performed during installation to tailor the stairlift to suit the user.



Do you need a hinged track?

In order for the seat to get low enough for the user to sit on, the track has to extend beyond the staircase to the hall floor. Some houses have a doorway close to the bottom of the stairs and the track may intrude across this. In these cases a hinged track should be fitted so that the track can be folded away from the doorway giving clear access.

Manual hinge

The Simplicity, Simplicity+ and Handicare 1000 are available with a manual hinged track. This means you will need to raise and lower the end of the track manually. The gas strut assisted hinge is designed to make manual operation as easy as possible.

Powered hinge

Handicare stairlifts can also be supplied with an automatic hinged track which means when operating the stairlift from the toggle, the hinge will lift/lower automatically.

When the stairlift is not in use the hinge is folded by holding a button on the remote control which means you do not need to move the track yourself. When the button is pressed your stairlift moves up the track and parks, the hinge section then moves automatically leaving the doorway clear. The Handicare 1000 straight track and both our curved tracks offer powered hinge solutions.

Important

Hinge tracks should always be raised when users go to bed, particularly if they are enabling access to the front door of a property or creating an obstacle for other users of the household.



Manual Hinge



Powered Hinges



Drop nose

In some circumstances, our single tube curved track can offer an alternative to a hinged track. If your staircase is compatible, a drop nose track can be installed which means the track will finish closer to the stairs than with a standard finish thereby removing the need for a hinged track.

The remarkable Slide Track

The Slide Track is a ground breaking solution, available only from Handicare, for use with a Simplicity or Simplicity+ straight stairlift. This unique solution removes the need for a hinge, instead the track moves up the staircase at the same time as the seat is moving, leaving the doorway at the base of your stairs unobstructed.

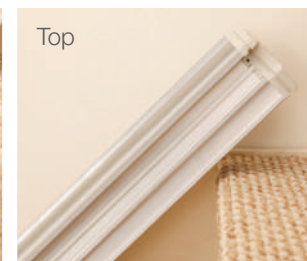
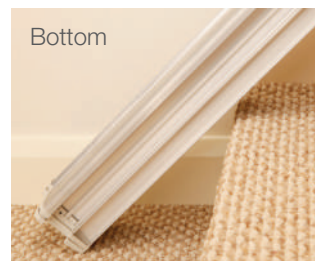
Similar to a powered hinge, the Slide Track works automatically when the toggle or remote control is activated.

A Slide Track is slightly shorter than the length of your staircase. When you start to travel up the staircase the track will move with you. The track will reach the top of your stairs before the stairlift, and stop whilst your stairlift continues on its journey to the top where you can safely dismount.

When you come downstairs the track will travel down with you so you can dismount safely at the bottom.

The Slide Track is fitted with safety sensors at either end, these will halt the track if it encounters an obstacle during use. Your stairlift will continue to move towards the obstacle if desired where, if safe to do so, you can remove the obstruction and continue your journey. Alternatively the track and stairlift can be moved away from the obstruction. The stairlift's safety sensors will halt the lift if it encounters the obstruction.

The Slide Track also offers safety benefits over a traditional hinged system by removing any risk of an object becoming caught in the hinge.



The benefits of a Handicare stairlift

Handicare is one of the world's largest manufacturers and installers of stairlifts; we have helped thousands of people regain their independence by providing safe and reliable solutions to the difficulties posed by stairs at home. At Handicare we know staying in their home can mean the world to some people and we are proud to have helped so many people overcome the problems they had climbing up and down stairs.

When you choose a stairlift from the Handicare range you are not only selecting a model that complies to British and European standards. You are also choosing an ISO Quality approved supplier who conforms to the ethical business practices required by both the British Healthcare Trades Association (BHTA), whose code of practice is approved by the Office of Fair Trading, and the Lift and Escalator Industry Association (LEIA). You have the peace of mind of knowing your stairlift has been made by a respected, reputable company with a tried and tested reputation for safety, reliability and innovation.

All Handicare stairlifts are designed with the user in mind. We have drawn on feedback from users, healthcare professionals and our substantial experience to develop a range of stairlifts to suit different users' needs and budgets too.

Some stairlift users may have limited dexterity or painful conditions such as arthritis; Handicare's signature operating toggle minimises these problems by making stairlifts easy to use. As with our joystick control, the toggle can be fitted on whichever side of the stairlift is easiest for you to operate.

All that you need to do to use your Handicare stairlift is to press or hold the operating toggle/joystick in the direction you wish to travel and your stairlift will transport you smoothly and safely.

Handicare stairlifts offer features such as a powered swivel seat and powered folding footplate; these can make using a stairlift even easier by allowing you to operate these functions at the touch of a button rather than manually – and battery backup means they will still work in a power cut. Even if you don't need them now, they may be something you will benefit from in the future.



Safety as standard

All Handicare stairlifts have safety sensors on the power pack and footplate; these are designed to stop the lift if it meets any obstruction. Once stopped it can only be moved in the opposite direction away from the obstruction.

The Simplicity, 1000 and 2000 series offer a numerical diagnostic display so that you can monitor the status of your stairlift, e.g. a safety edge has been activated.



Your stairlift will also come with a seat belt as standard for additional peace of mind. Handicare offers a range of seat belts including our easy release clip retractable seat belt or Velcro fastening option so you can find a safe solution to meet your needs.

All our upholstery options are fire retardant for additional peace of mind.



Easy to use



The toggle is located at the end of the seat arm; it can be easily operated by the hand or arm and leaves the arm rest clear to provide unhindered support when getting on or off the seat.

All Handicare stairlifts are operated by pressing or holding the large, robust toggle (shown above) or joystick (shown below) in the direction of travel.



Unique solutions for further piece of mind

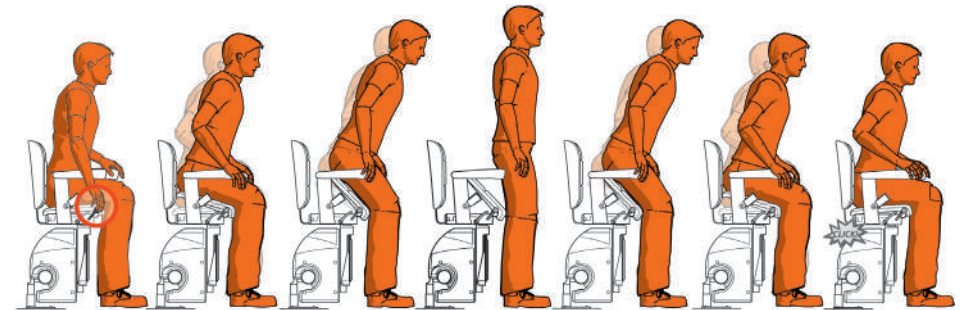
Handicare has an international team of product specialists who talk to stairlift users and healthcare professionals to understand how we can produce products to help make everyday life easier for equipment users and carers.

We are pleased to offer a series of unique features that can be added to the Elegance Seat for use with our single tube curved stairlift system.

Active Seat: Helping users cope with the day's 'ups and downs'

This unique and patented development provides assistance for those users who would like some additional support when getting on or off the stairlift.

It can also provide a greater sense of security when sitting down as the seat can be felt directly behind you.



Standing Up

The Active Seat lever is next to the seat; when seated you simply lift it up to activate the seat. Using the arm rests for additional stability, you will benefit from a gentle boost as you rise to the standing position.

The Active Seat will then remain in an upward position ready to assist when you sit down again.

Sitting Down

Using the arm rests for additional stability, sit down as normal, the seat will give you extra support so you can sit in a gentle and controlled manner.

Healthcare professionals are really enthusiastic about the easy to use Active Seat which can also improve carer assisted transfers by reducing the physical assistance required to support the sitting or standing action.

The Active Seat puts you in control because you can choose when to use it. This makes it ideal for conditions where physical ability varies on a day to day basis as it is on hand to provide help as needed.

Keeping you in touch, at the touch of a button

Some users, particularly those living alone or with a medical condition, may have concerns personal to them, or their condition, about the unattended use of a stairlift.

Adding Voice Connect gives a level of back up that can help resolve these concerns. With it users can talk to one of three pre-programmed contacts from the stairlift seat should an emergency arise when using the stairlift.

This is all at the touch of a button and is a simple solution to help users feel more confident about using their stairlift when alone at home.

Only available from Handicare, and compatible with the Elegance seat, this option is simple to install with no additional wiring and is programmed to link it to a wireless (DECT) landline phone similar to the one shown above.



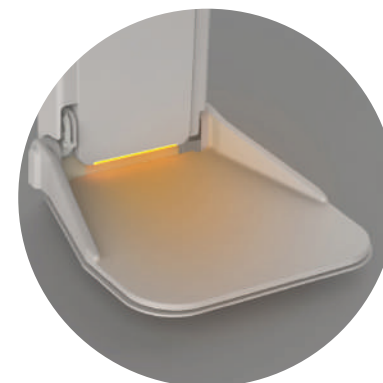
Lighting the way to safer halls and stairs

Due to its battery back up, your Handicare Stairlift will continue to work in the event of a power failure. Thanks to our ongoing product development using a stairlift in low light conditions, such as a light bulb failing or power cut, is safer than ever thanks to Handicare's illuminated powered footrest option.

When the Elegance or Classic seat powered footplate is unfolded it is illuminated by a subtle LED light.

This low energy solution remains illuminated when the stairlift is parked on a charge point with the footrest down so it also lessens the risk of the stairlift causing a trip hazard should the light source fail.

In the event that it is left off charge with the footplate down the light will switch off after 15 minutes.



Choosing a seat to suit your needs



Swiveling your Stairlift Seat

When you arrive at the top of the stairs you will need to swivel your seat round so that you exit onto the landing safely.

Manual swivel

If you have a manual swivel you will find a handle at either side of the seat. By pressing either handle down, you can swivel the seat around to face the landing, where it will lock in place, allowing you to dismount safely. Pushing the handle down and turning the other way will put the seat in the travel position.

Powered swivel

If you choose the powered swivel option you simply swivel the seat by continuing to hold the toggle in the direction of travel when you arrive at the top of the staircase. Handicare's powered swivels have a manual override for emergency release to improve stairway access if required.

Folding your footplate

The footplate and seat can be folded up to increase available space leaving the hall and staircase as clear as possible for other users.

Manual footplate

Lifted and lowered by hand, manual footplates are fitted with an easy fold mechanism that minimises the strength required to fold the footplate up or down.

Powered footplate

If you choose the powered footplate option it will remove the need for you to bend down to fold or unfold the footplate. There are a variety of ways in which the footplate can be activated. You can choose to have a footplate that folds automatically when the seat is folded and unfolded, or that is operated independently of the seat by a switch in the seat arm so you can raise and lower the footplate whilst seated.

Parking and calling your stairlift

All Handicare stairlifts come with two remote controls as standard, so you can have one upstairs and one downstairs. This means you can send your stairlift up and down the track without having to sit on it. This not only allows you to park at the top or bottom of the stairs, it is ideal for multi-user situations as your stairlift can be called between levels, just like an elevator.

Downward facing seat

Some seats can be fitted at 45° to the wall. This is particularly useful on narrow stairs or if the user has limited knee flexion.

Stairlift range

Handicare 1000	16
Outdoor 1000	17
Simplicity+	18
Simplicity	19
Perch	20
Handicare 2000 Style	21
Handicare 2000 Simplicity	22
Elegance	23
Classic	24



Smart Seat and Handicare 1000

Straight stairlift

With one of the slimmest straight stairlift tracks on the market, the Handicare 1000 offers minimal track intrusion into the staircase.

This slimline aluminium track has a hidden rack with two park points as standard so the battery can be charged at the top or bottom of the stairs. It can also be supplied with a powered hinge to prevent the track obscuring a doorway at the base of the stairs.

The Smart Seat delivers a choice of six upholstery colours and optional powered features to turn the seat at the top of the staircase or fold the footplate after use.

The Handicare 1000 boasts our heaviest weight capacity: the 1000 offers 137kg/21½st, the 1000XL 160kg/25st and the XXL 200kgs/31½st. Both the XL and the XXL are supplied with additional arm spacers to increase the distance between the arms.

Specification

Min-max overall footplate to seat:	465-540mm
Width of seat at widest point:	460mm
Min folded intrusion:	385mm
Max user weight Handicare 1000:	137kg/21½st
Max user weight Handicare 1000XL:	160kg/25st
Max user weight Handicare 1000XXL:	200kg/31½st
Max user weight with Hinge Track:	137kg/21½st



Outdoor 1000

Straight stairlift

It isn't only stairs inside the home that cause problems for some people. Steps up to a porch or front door can be equally difficult to climb.

The Handicare 1000 Outdoor stairlift is fully waterproofed and designed to overcome the problems caused by external straight stairs.

Like all Handicare stairlifts the outdoor model has a key switch to prevent unauthorised use of the lift, which means it can be isolated when not in use.

Supplied with UV stable slate grey upholstery, Handicare's outdoor stairlift also comes with a waterproof cover to keep it protected from the weather so it is always ready for use.

Specification

Min-max overall footplate to seat:	465-540mm
Width of seat at widest point:	460mm (+50mm with arm spacers)
Min folded intrusion:	385mm
Max user weight:	137kg/21½st
Max user weight with Heavy Duty Kit:	160kg/25st



Simplicity⁺

Straight stairlift

For those requiring full powered options, the Simplicity⁺ is a stylish solution that overcomes the challenges of climbing straight stairs. It combines the continuous charge track of the Simplicity with the seat of the Handicare 1000, which means it is available in a selection of six colours.

The Simplicity⁺ offers the choice of manual or powered folding footplate and swivel options.

The Simplicity⁺ is compatible with the powered Slide Track or manual hinge system so if you have a doorway close to the bottom of your stairs the Simplicity⁺ offers you a choice of solutions to prevent the track from causing an obstruction.

Specification

Min-max overall footplate to seat:	430-540mm
Width of seat at widest point:	460mm
Min folded intrusion:	370mm
Max user weight:	140kg/22st
Max user weight with Hinge/Slide Track:	120kg/19st



Simplicity

Straight stairlift

If you do not require powered swivel options, and you have a straight staircase, the Simplicity offers you a safe and cost effective way to overcome the challenge of climbing your stairs.

The upholstery is available in neutral, sand coloured, wipe clean flame retardant fabric.

The Simplicity seat swivel is manually operated but you can choose to add a powered footplate if you wish. The Simplicity comes with a clip seat belt as standard.

The Simplicity Series track offers a continuous charge function meaning that the lift can be parked on any part of the track when it is not in use. This means you do not need to worry about where you leave your lift on the track as the batteries will charge in any position.

The Simplicity track can be supplied with a manual hinge or a Slide Track if required (see pages 8-9).

Specification

Min-max overall footplate to seat:	390-560mm
Width of seat at widest point:	480mm
Min folded intrusion:	285mm
Standard user weight:	140kg/22st
Max user weight with Hinge/Slide Track:	120kg/19st



Perch Seats

Straight and curved stairlifts

If you have restricted movement in the knee or hip joints you may find sitting painful. In these situations a perch Smart seat may be the best solution for you.

A Perch seat means that the user is almost in a standing position when they are using the lift. There is a shortened seat (and retractable seat belt) which provides a stable support area for users to 'perch' on.

Perch seats are available on the Simplicity+, Handicare 1000 and 2000 lifts. Handicare is the only manufacturer who can offer you a perch seat on a curved system. Upholstery is available in a choice of six colours.

Your Handicare supplier will be able to advise you which seat is most suited to your needs.

Specification

Min-max overall footplate to seat is dependent on the model chosen but the max would be 877mm (Handicare 1000 straight) or 875mm (Handicare 2000 curved)

Width of seat at widest point:	460mm
--------------------------------	-------

The folded intrusion is dependent on the model chosen – your Handicare dealer can supply detailed measurements.

Max user weight Simplicity+:	140kg/22st
------------------------------	------------

Max user weight Handicare 1000:	137kg/21½st
---------------------------------	-------------

Max user weight Handicare 2000:	115kg/18st
---------------------------------	------------



Style Seat and Handicare 2000

Twin rail curved stairlift

Handicare's Style seat allows you to combine the 2000 curved track system with optional powered features to fold the footplate after use or swivel the seat to enhance ease of exit.

This stylish solution is tailored to your needs and your individual staircase, ensuring the best fit possible whilst giving you a choice of upholstery finishes and colours too.

The twin rail system, designed for a stable and smooth ride, is supplied in light grey, brown or gun metal as standard; Handicare also offer special orders so the track can be finished in any colour to suit your décor.

The track can be designed to take you from the ground floor directly onto the landing level, to meet your needs exactly and offers an automatic hinge solution to prevent the track obscuring a doorway at the base of the stairs.

Specification

Min-max overall footplate to seat:	497-579mm
Width of seat at widest point:	450mm
Min folded intrusion:	400mm
Max user weight Style Seat	115kg/18st
Max user weight with Hinge Track	115kg/18st
Max user weight with Heavy Duty Kit	137kg/21½st



Simplicity Seat and Handicare 2000

Twin rail curved stairlift

If you do not require a powered swivel option, and you have a curved staircase, the 2000 Simplicity offers you a safe and cost effective way to overcome the challenge of climbing your stairs.

The twin rail system, designed for a stable and smooth ride, is supplied in light grey, brown or gun metal as standard; Handicare also offer special orders so the track can be finished in any colour to suit your décor.

The track can be designed to take you from the ground floor directly onto the landing level, to meet your needs exactly.

The upholstery is available in a neutral sand coloured wipe clean flame retardant fabric.

The Simplicity seat swivel is manually operated but you can choose to add a powered footplate if you wish. The 2000 Simplicity comes with a retractable seat belt as standard.

Specification

Min-max overall footplate to seat:	497-579mm
Width of seat at widest point:	450mm
Min folded intrusion:	400mm
Max user weight with Hinge Track	115kg/18st
Max user weight with Heavy Duty Kit	137kg/21½st



Elegance Seat and Van Gogh, Rembrandt or Vermeer

Single rail curved stairlift

The Elegance offers a lightly padded, leather look seat that delivers both comfort and style. Available in a choice of three colours and is supplied with a cream retractable seat belt as standard.

This seat can be supplied on our single rail curved system with a choice of two seat positions. The standard position with your back to the wall or our downward facing seat positioned at 45° to the wall. This seat comes with a specially designed footrest which means that this seat configuration can be used to provide a solution for particularly narrow curved staircases.

The Elegance seat can be combined with a hinge or drop nose track. The single tube system is available in a choice of three colours as standard: cream, grey and brown.

Specification

Specification	VG	R	V
Overall footplate to seat:	490mm		
Width of seat at widest point:	465mm		
Min folded intrusion:	420mm	440mm	
Max user weight:	125kg/19½st		
Max user weight with Hinge Track:	125kg/19½st		



Classic Seat and Van Gogh, Rembrandt or Vermeer

Single rail curved stairlift

The Classic seat is a durable solution offered in a choice of three colours and it comes with a retractable seat belt as standard.

This seat can be supplied on our single rail curved system with a choice of two seat positions. The standard position with your back to the wall or our downward facing seat positioned at 45° to the wall. This seat comes with a specially designed footrest which means that this seat configuration can be used to provide a solution for particularly narrow curved staircases.

The Classic seat can be combined with a hinge or drop nose track. The single tube system is available in a choice of three colours as standard: cream, grey and brown.

Specification	VG	R	V
Overall footplate to seat:	475mm		
Width of seat at widest point:	440mm		
Min folded intrusion:	420mm	440mm	
Max user weight:	125kg/19½st		
Max user weight with Hinge Track:	125kg/19½st		



Your questions answered

For many people making the decision to have a stairlift installed can be a daunting one. We have answered a few of the more common questions below. If you have further questions your Handicare supplier will be happy to answer these, no matter how small. Don't worry, it is unlikely you will be the first person to ask!

Will I need to redecorate once my stairlift is installed?

Your new stairlift will be fitted to your staircase (over existing carpet), not your wall so in most cases the answer will be no.

In some instances you may need to have a handrail moved or a window sill reduced in order to avoid clashes with your new stairlift, in which case some minor re-decoration may be preferred.

How long does it take to install a stairlift?

The configuration of your staircase will determine how long it takes to fit your lift, however most lifts will only take between two to four hours to install.

What happens if there is a power cut?

There's no need to worry. Your Handicare stairlift is operated by batteries, these re-charge when your stairlift is left on a charge point. This means your stairlift will continue to work if the power supply is interrupted for a limited number of trips. The Simplicity Series stairlifts will charge wherever they are left on the track.

What happens if I leave my stairlift off charge?

Audible (and visual Simplicity, 1000 and 2000 Series) signals will alert you that your lift is not on a charge point. The power supply to the stairlift should remain switched on at all times. If stairlift batteries are allowed to go completely flat they may need to be replaced.

What if I want to have a new carpet?

Your stairlift can be removed and refitted to allow for the laying of new carpets. Many stairlift suppliers offer removal and re-installation (lift and lower) services.

How long will I have to wait for my stairlift?

This will depend on which Handicare lift you order, Handicare understand the difference a stairlift can make to your quality of life which is why we aim to offer the shortest market lead times possible.



Handicare's Stairlifts at a glance

Seat options	Handicare 1000	Simplicity+	Simplicity	2000 Style	2000 Simplicity	Elegance	Classic
Colour options							
Clip seat belt	X	X	✓	X	X	X	X
Velcro seat belt	○	○	X	○	○	X	X
Retractable seat belt	✓	✓	X	✓	✓	✓	✓
Choice of upholstery	✓	✓	X	✓	X	✓	✓
45° downward facing seat	X	X	X	X	X	○	○
Turn and Go	X	X	X	X	X	✓	✓
Powered swivel	○	○	X	○	X	○	○
Short arm	X	X	○	○	○	X	X
Perch	○	○	X	○ (Smart seat)	X	X	X
Outdoor version	○	X	X	X	X	X	X
Footplate options	Handicare 1000	Simplicity+	Simplicity	2000 Style	2000 Simplicity	Elegance	Classic
Manual	✓	✓	✓	✓	✓	✓	✓
Powered from seat	○	○	X	X	○	X	X
Powered from arm	○	○	X	○ (Smart seat)	X	○	○
Track features	Handicare 1000	Simplicity+	Simplicity	2000 Style	2000 Simplicity	Elegance	Classic
Colour options	X	X	X				
Travels around corners and bends	X	X	X	✓	✓	✓	✓
Charge anywhere on track	X	✓	✓	X	X	X	X
Multiple charge points	✓	X	X	✓	✓	✓	✓
Slimline anodised track	✓	X	X	X	X	X	X
Track available in any colour	X	X	X	○	○	○	○
Zero intrusion into landing	X	X	○	○	○	○	○
Manual hinge	○	○	○	X	X	X	X
Powered hinge	○	X	X	○	○	○	○
Slide Track	X	○	○	X	X	X	X
Weight capacity	Handicare 1000	Simplicity+	Simplicity	2000 Style	2000 Simplicity	Elegance	Classic
Standard maximum weight	137kg/21½st	140kg/22st	140kg/22st	115kg/18st	115kg/18st	125kg/19½st	125kg/19½st
Max weight with Heavy Duty Kit	200kg/31½st	X	X	137kg/21½st	137kg/21½st	X	X
Standards compliance	Handicare 1000	Simplicity+	Simplicity	2000 Style	2000 Simplicity	Elegance	Classic
ISO 9386-2:2000	✓	✓	✓	✓	✓	-	-
EN 81-40:2008	✓	✓	✓	✓	✓	✓	✓
CE Mark	✓	✓	✓	✓	✓	✓	✓

Colour options

Seat options

- A selection of colours means you can choose upholstery to match your décor.
- This black belt has a central clip which is squeezed both sides to operate.
- This black belt has velcro on either end to hold it firmly in place.
- This retractable belt can be clipped together on one side or centrally.
- A selection of colours means you can choose upholstery to match your décor.
- This enables travel in a slightly downward position on narrow staircases.
- Enables travel in a downward facing position for narrow curved staircases.
- This makes turning the stairlift seat to get in and out on the landing as easy as possible.
- This allows a seat to swivel on particularly narrow staircases.
- Ideal for users who have difficulty bending at the hip or knee joint.
- Designed for use outside, up to a front door for example.

Footplate options

- The footplate is folded and unfolded manually.
- Folds the footplate away when the seat is folded up.
- The footplate can be lifted and lowered by a switch under the arm whilst the user is seated.

Track features

- A selection of colours means you can choose a track to match your décor.
- For a wide range of staircases, from ones that turn a corner to multi-flight or spiral.
- Your lift charges wherever it is parked on the track.
- Use your remote control to park on charge points.
- The slim track maximises the clear space on your staircase once your stairlift is installed.
- Customise your curved stairlift track colour to match your décor.
- For use when a doorway close to the top of the stairs would be obstructed by the track.
- For use when a doorway close to the bottom of the stairs would be obstructed by the track.
- Automatically moves the track while the stairlift moves leaving doorways unobstructed.
- The track moves with the stairlift, leaving doorways clear, removing need for a hinge.

Key: ✓ Available as standard ○ Optional ✗ Not available



handicare

Please be aware that actual colours and specifications may vary slightly from those shown. All information is provided in good faith but does not constitute a guarantee. Handicare Accessibility reserves the right to alter designs and specifications without prior notice.

Handicare 1000 / Simplicity+ / Handicare 2000 HD (PU finish)

Sand	Slate	Cocoa
Jade	Sapphire	Ruby

Simplicity

	Available in a sand coloured wipe clean material finish.
Sand	

Style (leather look finish)

(material finish)

Vanilla Beige	Ivory White	Cherry Red

Elegance (leather look finish)

Cream	Cocoa	Bordeaux

Classic (PU finish)

Sand	Slate	Bordeaux

Handicare 2000

Light Grey	Brown	Gun Metal

Van Gogh / Rembrandt / Vermeer

Cream	Brown	Grey

Upholstery colour options

Track colour options

Also available from Handicare



Bathing Solutions



Moving & Handling



Handicare, 82 First Avenue, Pensnett Estate
Kingswinford, West Midlands DY6 7FJ
User support: 03700 118282
Textphone: (180015) 020 7490 8913 ext 05
Voicephone: (18002) 020 7490 8913 ext 05
Global Dealer Support: +44 (0) 844 225 3121
enquiries@handicare.co.uk

www.handicare.co.uk



Please be aware that actual colours and specifications may vary slightly from those shown. All information is provided in good faith but does not constitute a guarantee. Handicare Accessibility reserves the right to alter designs and specifications without prior notice. V1015